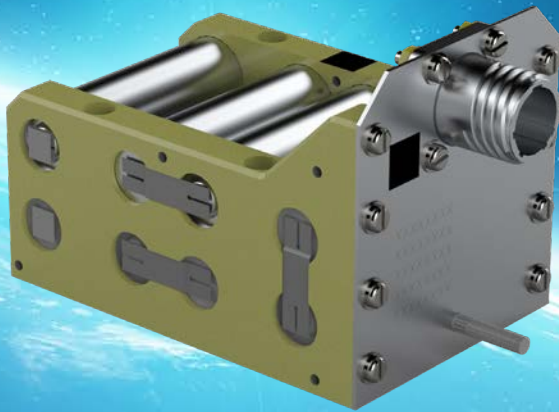


Fully qualified for space applications, this battery has been utilised on various launch vehicles, including for Flight Termination Systems (FTS).

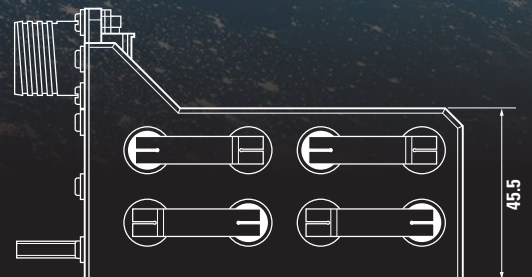
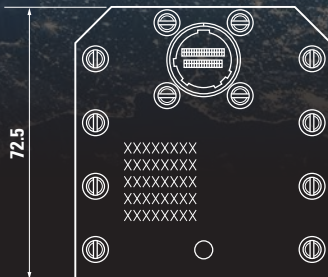
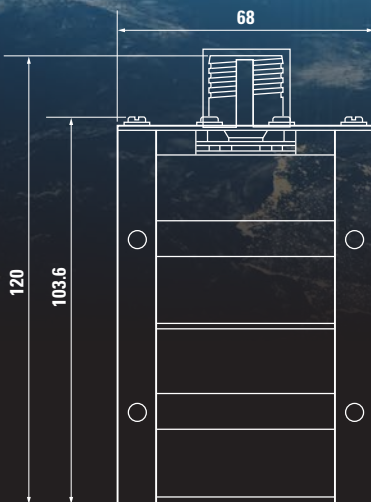
The design incorporates a single keyed circular connector and does not require cell balancing electronics, making it easy to store, use and integrate into the spacecraft.



**Facts at a Glance**

ABSL™ Cell	P20
Topology	8s1p
Voltage Range (V)	33.6 - 24.0
Nameplate Capacity	2 Ah
Energy	59.2 Wh
Footprint	105 x 70 mm
Height	74 mm
Mass (kg measured)	0.52

**Celebrating customer success with over 5.5 billion cell hours of in-orbit heritage using ABSL™ Li-ion cell technology**



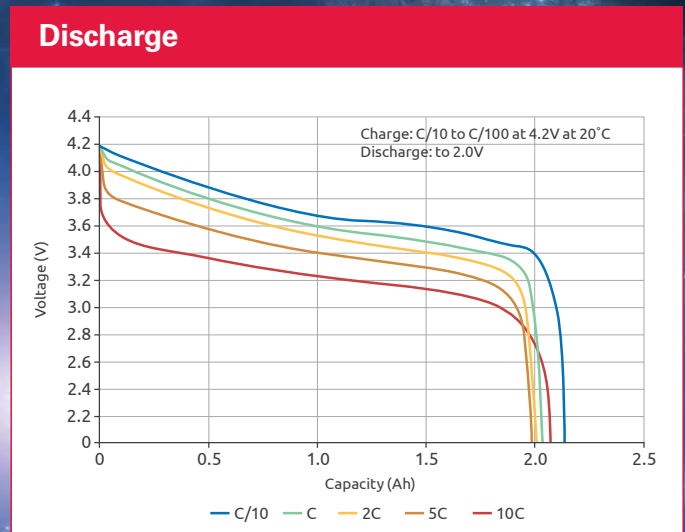
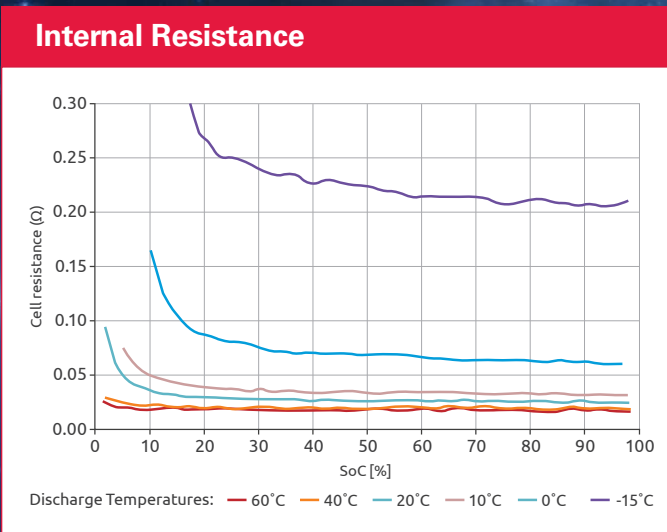
**Qualification**

Temperature	
Non-Operating (°C)	Operating (°C)
-20 to 60 (Cell Level Qual only)	0 to 40 (Thermal chamber only)

Cell Level Radiation Exposure	
Dosage Mrad	Effects
10	<1% decrease in capacity

Shock	
Frequency (Hz)	Input (g)
100	40
2000	3000
10,000	3000
No of shock (per axis)	3

Random Vibration	
Frequency (Hz)	Input (g <sup>2</sup> /Hz)
20	0.0913
60	0.273
1000	0.273
2000	0.0686
Overall G <sub>RMS</sub>	20
Duration	4



EMEA/APAC-EN-DS-ABSL-CM58-8s1p-0722-Preliminary

